

**RATINGS & CAPACITIES**



Input : 1,000 MBH  
Gross Output : 820 MBH

24.5 B.H.P. (240.3 kW)  
Fuel : Natural Gas or Propane  
Inlet Gas Pressure (NG) : 5 PSI Max.  
Inlet Gas Pressure (LP) : 2 PSI Max.  
(NG/LP) : 7" W.C. Min.  
Operating Weight : 1,397 Lbs. (633.7 kg)

**ELECTRICAL SUPPLY OPTIONS**

120v/1ph/60hz:	7.5 Amps
208v/1ph/60hz:	6.6 Amps
230v/1ph/60hz:	6.4 Amps
208v/3ph/60hz:	6.0 Amps
230v/3ph/60hz:	6.0 Amps
460v/3ph/60hz:	3.0 Amps

**ASME DESIGN DATA**

Max. 160 PSIG & 250°F

**TRIM & CONTROLS**

High Temperature Limit	TSBC(EVS ONLY)
Flame Safeguard	RWF55(EVA/EVO ONLY)
High/Low Gas Press Switches	Pilot Gas Valve
Modulating Gas Valve	Pilot Gas Regulator
Operating Control	Pilot/Leak Test Cocks
Blower Motor, 1-1/2 HP	Combustion Air Switch
Water Flow Switch	Press. & Temp. Gauge
LWCO	Relief Valve
	VFD

**DOUBLE BLOCK & BLEED(D.B.&B.) GAS TRAIN OPTION**

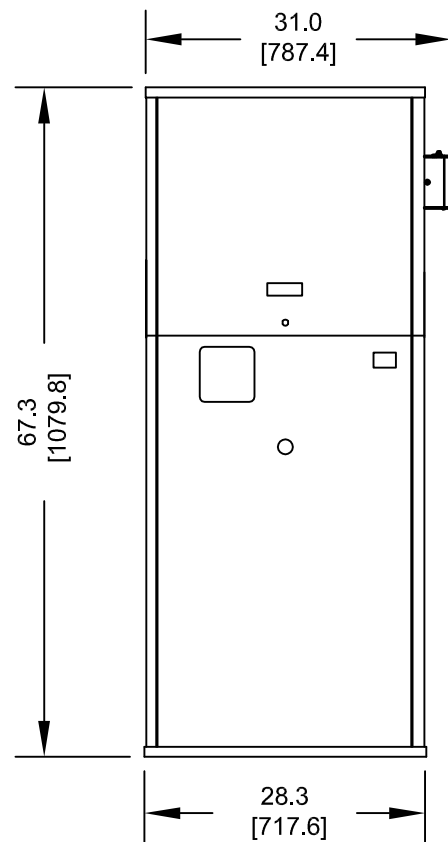
The following components are included in addition to above items when this option is used.  
(1) Motorized Gas Valve, (1) Solenoid Gas Valve  
N.O. Vent Valve

**D.B.&B. W/ P.O.C. GAS TRAIN OPTION**

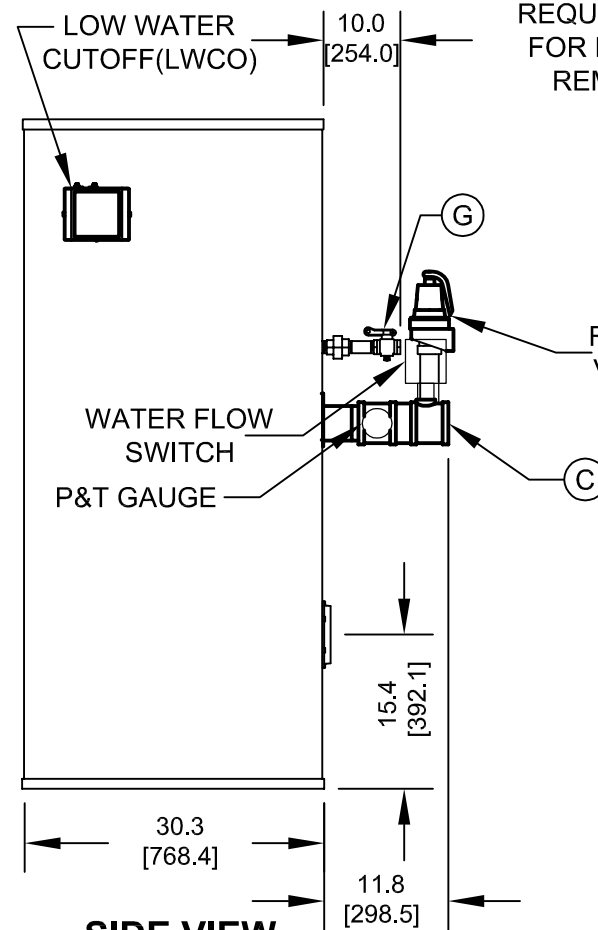
The following components are included in addition to above items when this option is used.  
(2) Motorized Gas Valves With Proof Of Closure switches  
Flame Safeguard that recognizes proof of closure valves.  
N.O. Vent Valve

**NOTES:**

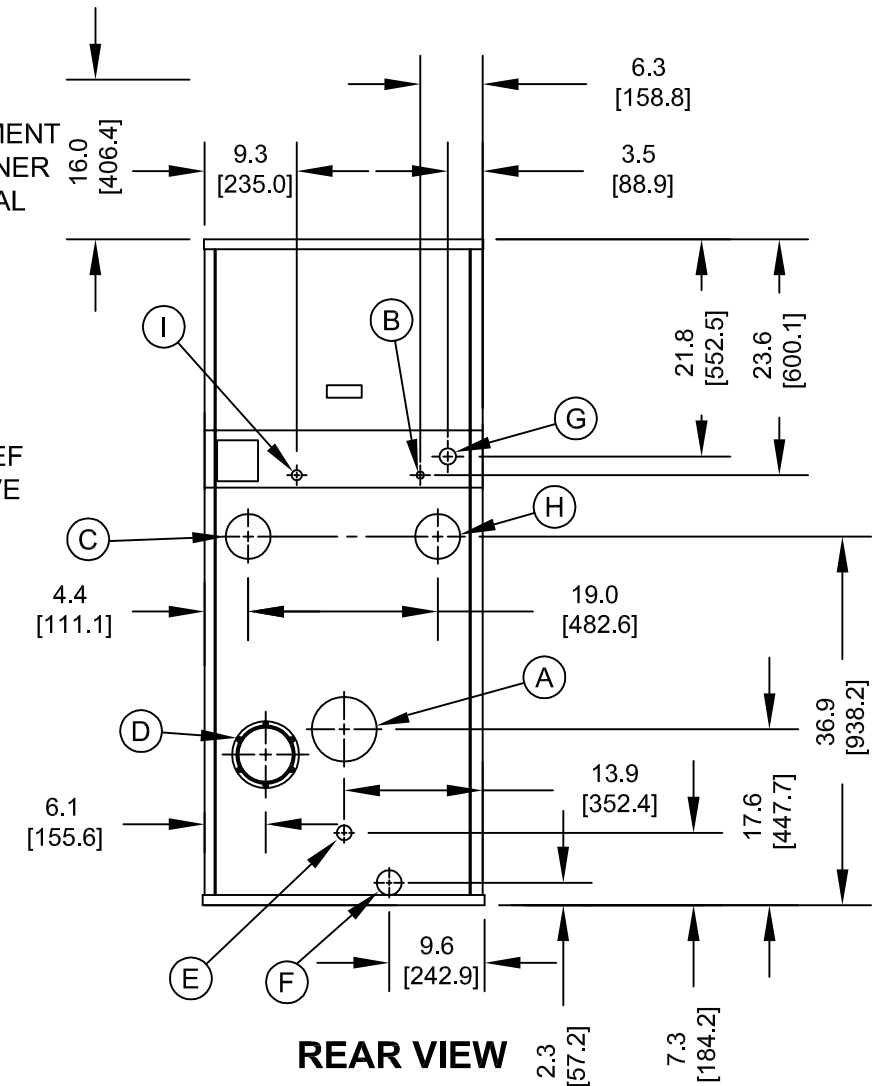
1. SEE O&M FOR REQUIRED INSTALLATION CLEARANCES.
2. DIMENSIONS SHOWN ARE FOR REFERENCE ONLY.
3. DIMENSIONS ENCLOSED IN [ ] ARE IN MM.



**FRONT VIEW**



**SIDE VIEW**



**REAR VIEW**

CONNECTION	DESCRIPTION
(A)	FLUE OUTLET, 6" [152.4] DIAMETER (AL29-4C SS)
(B)	GAS PILOT, 1/4" [6.4] O.D. TUBE
(C)	WATER SUPPLY TO SYSTEM, 3" NPT
(D)	INLET AIR, 6" [152.4] DIAMETER
(E)	DRAIN, CONDENSATE, 5/8" [15.9] O.D. TUBE
(F)	DRAIN, BOILER, 1" NPT
(G)	GAS SUPPLY, 1 1/2" NPT
(H)	WATER RETURN FROM SYSTEM, 3" NPT
(I)	GAS VENT, 3/4" NPT (D.B.&B. & D.B.&B. w/POC ONLY)

**EVA/EVS/  
EVO-1000  
WATER  
HEATER**



P.O. Box 3244, Lancaster, PA 17604-3244

Innovative Equipment For Hot Water Systems  
www.thermalsolutions.com